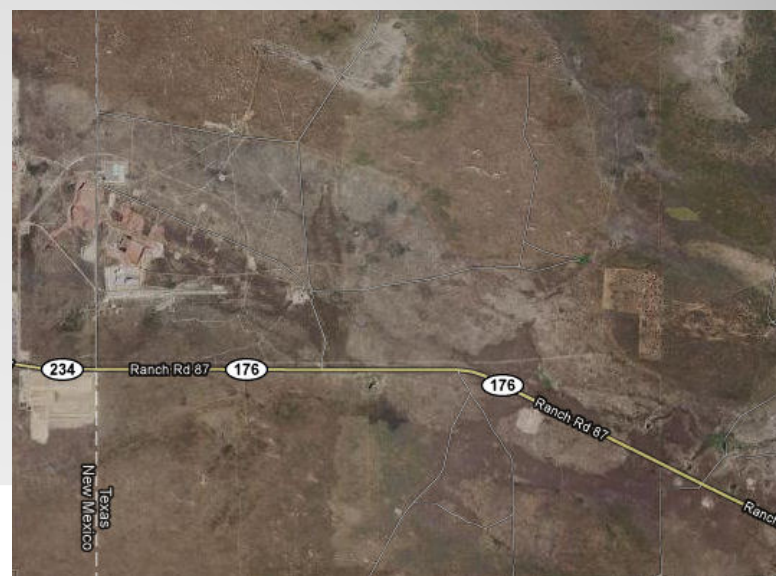
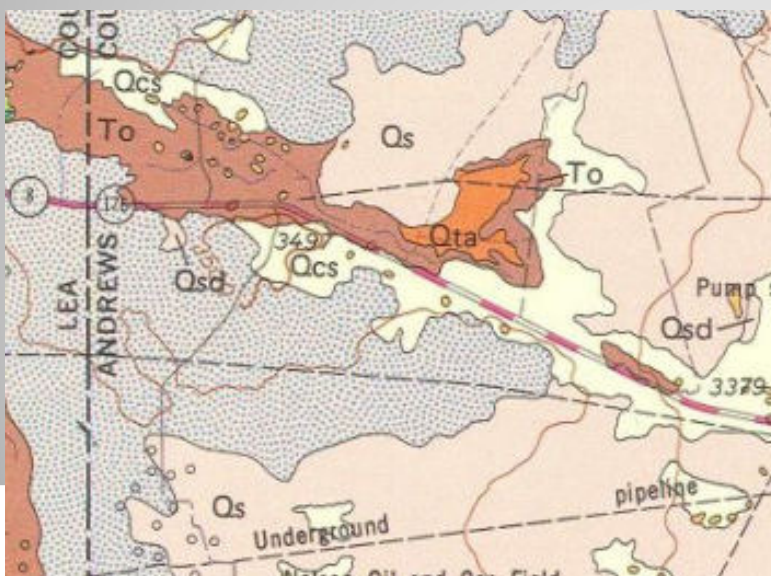


# TexasNuclearSafety.org

Asking tough questions about importing radioactive waste to Texas

- A commission appointed by Perry seeks to import radioactive waste from 36 states to Texas
- The dump site is believed to sit atop a recharge formation feeding the Ogallala Aquifer

Click images to see maps online



**EPA Region 6 external affairs department**

Dave Bary 214-665-2208

Cynthia Fanning 214-665-2142

**EPA's WCS site "contact"**

Gary Miller 214-665-8306, 214-665-8318

**Texas Water Development Board**

Ian Jones 512-936-0848

[Ian.jones@twdb.state.tx.us](mailto:Ian.jones@twdb.state.tx.us)

**Additional Contacts for Aquifer  
Issue**